



Wireless Energy Monitor

MODEL:SE302

User Manual

Wireless Energy Monitor

User Manual

Table of Contents

Introduction	2
Features	2
Overview	2
---System	
--- Display	
--- Display Details	
--- Transmitter and Sensor	
Installation	4
--- Sensor	
--- Battery	
--- Transmitter and Sensor	

Operating Guide	5
--- Display Menu Configuration	
--- Display Screens	
--- Alarm	
--- Miscellaneous Functions	
Important Safeguards	12
FAQ	13
Specification	16
Packing List	16

Introduction

Welcome to the world of Wireless Energy Monitor! A world where energy usage is visible and controllable. Your Wireless Energy Monitor device delivers this world to you. The Wireless Energy Monitor is an elegant and simple in-home display that places easy to understand energy usage information at your fingertips. The Wireless Energy Monitor makes reducing energy waste, saving money and leading a green lifestyle easy and fun. For your protection, please read the overview, installation and safety sections before installing the device. Please carefully observe all warnings, precautions and instructions on the device.

Features

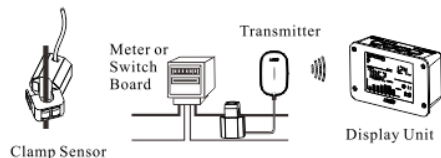
- Display of current and cumulative energy usage, cost and CO2 emissions
- Display of hourly, daily, weekly and monthly energy usage data
- Graphical display of historical energy consumption data
- Time and date information
- Alarm to notify high energy use
- Two years of historical data storage
- Single and dual tariff rates
- One, two and three phase support

2

- Low battery indicator and backlit display
- Optional 5V DC adapter input

Overview

System

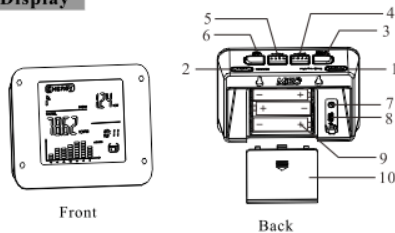


The Wireless Energy Monitor consists of an elegant in-home display and a companion transmitter. The transmitter is a battery operated measurement unit that uses its accompanying sensors to measure the electricity flowing into the home. The sensors are clipped around the incoming power wires found on the home circuit panel (This operation should be performed by a licensed electrician or a professional installer. Consult your retailer for more information).

The transmitter makes continuous measurements of the sensor. These measurements that relate to the electricity

flowing into the home are transmitted periodically to the display.

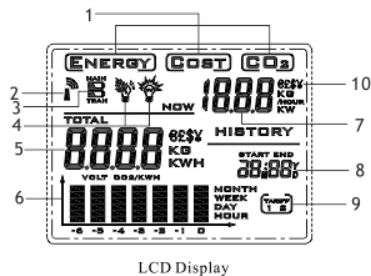
Display



- 1----TIME/ALAM: Setting time and alarm
- 2----SARCH: Searching wireless signals
- 3----HISTORY/ENTER: Inquiry history data and enter confirmation
- 4----BWD/-: Check last data/ number minus 1
- 5----FWD/+ : Check next data/ number plus 1
- 6----MODE/SET: Setting modes and parameters
- 7----DC socket
- 8----USB socket
- 9----3×AAA 1.5V battery
- 10----Battery cover

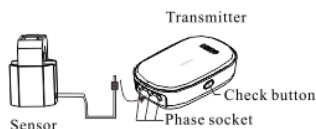
3

Display Details



- 1-- Display mode: Energy/Cost/CO2 emission
- 2-- Signal link indicator
- 3-- Low Battery indicators
- 4-- Alarm icons
- 5-- Current/historical Energy consumption/ cost / CO2 Emission data
- 6-- Histogram of Energy/ Cost/ CO₂ Emissions
- 7-- Display current Energy consumption/ cost / CO₂ Emission data
- 8-- Clock & Calendar
- 9-- Tariff rates
- 10-- Currency

Transmitter and Sensor



The sensors are clipped around the insulated incoming power cables. Most household electricity supplies use single phase. But some use two or three phases. There are typically two cables in a US home. The sensors are connected to the sockets on the Transmitter as seen in the diagram. This operation should be done by a licensed electrician or a professional installer. Consult your retailer for more information.

Installation for example two phases

The following installation instructions are for a licensed electricians or a professional installer. Please contact your retailer for more information.

1. Remove Circuit Breaker panel cover
2. A typical home has three lines phase A, phase B, and a neutral. Locate phase A and phase B lines. Push downwards on the sensor latch to open it. Place the opened sensor

4

around the Phase A wire. Close the sensor and ensure that the latch is locked. Do the same for the Phase B wire with the second sensor. Do not place a sensor on the neutral wire. This will cause an incorrect reading. Ensure that both sensors are locked firmly around the wires.

3. Plug the other end of the sensors from phase A and phase B lines into two consecutive slots on the transmitter unit. There will be one empty slot. Place a cap around the empty slot.

4. Hang the transmitter on the wall (use slot at the back) or place it down on a level surface. Make sure it is secure and not exposed to extreme temperature, rain, snow, high humidity or vibrations.



Placed the open sensor around the incoming Power wire

Close the sensor. The sensor is secured when a 'click' is heard.

Replace batteries

- Remove the battery cover from the back of the transmitter and display.
- Insert 3 x AA batteries into the compartment ensuring that the polarities are correct.
- Replace the battery cover of the transmitter and display unit

Note

You may also power the display by using the supplied 5V DC adapter.

Link display unit and transmitter

Press the "SEARCH" button on display for 2s. The link signal icon will start blinking. Press the "CHECK" button on the transmitter. The blinking will stop once the connection between the transmitter and display is established. This is a secure connection enabling the display to receive only information from its linked transmitter.

Operating Guide

Setting time and date

- Press the 'TIME' button and hold for 2 seconds. The last two digits of year flashes. Press the FWD /BWD button to set the current year.



- Press 'TIME' button again to set the month. Use FWD /BWD button to set the correct month.



5

Advanced setting (voltage, currency, tariff, Co2 emission)

- Press 'MODE' button and hold for 2 seconds to set the 'voltage'. While '220' flashing, use FWD/BWD buttons to adjust the voltage. The voltage should be in the range of 110 — 132 Volts for the US; 200--240 volts for most countries.



- Press 'MODE' button again to set the "currency unit". Default "€" will be flashing, Use FWD/BWD buttons to choose the \$ currency symbol



- Press 'MODE' button again to set the "current tariff". Default "TARIFF1" will be flashing, Use FWD /BWD buttons into "TARIFF2" for using two tariff standards.



- If "TARIFF2" is selected in the last step, press 'MODE' button again to set the start time for TARIFF2. Use BWD/FWD buttons to set the hours and press MODE button to save and move to minute set up. Set minutes using BWD/FWD and press MODE Button to confirm. Repeat the process for setting end time.



7

- Press 'MODE' button again to set tariff2 standard, when numbers '0.145' flashing, use FWD /BWD button to set, Press and hold FWD/BWD button to increase the number quickly from 0.05 to 9.95.



- Press 'MODE' button again to set CO₂ emission. The number "0.449" (kg/kwh) flashing, Press FWD /BWD button to set.



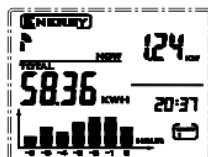
- If you have not chosen "TARIFF2", the above step will be skipped.

- Press 'MODE' button again to set tariff1, the number "0.125" flashing, Pressing FWD /BWD button, the number will increase/reduce .



Current and Cumulative Energy Consumption, Cost, CO₂

- Default screen shows the current and cumulative usage in kW and kWh



8

- Press ‘MODE’ button to see the ‘COST’ display. Current and cumulative cost



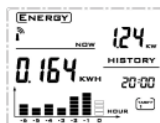
- Press ‘MODE’ button again to see the ‘CO2’ display. Current and cumulative emissions



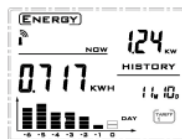
- Time and date display (in the lower right screen) toggles every 10 seconds. The histogram in the left screen indicates the usage of energy in last 7 hours.
- Press ‘MODE’ button once again to return to current ENERGY display.

How to view historical data

- Press ‘HISTORY’ button to see the hour historical data denoted by “per hour” display. Use BWD/FWD button to look up the usage of energy for last 7 hours. The corresponding block in histogram will flash.

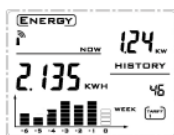


- Press ‘HISTORY’ button again to see the day historical data denoted by “per day” display. Use BWD/FWD button to look up the usage of energy for last 7 days. The corresponding block in histogram will flash.

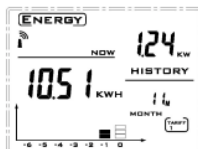


9

- Press ‘HISTORY’ button again to see the week historical data denoted by “per week” display. Use BWD/FWD button to look up the usage of energy for last 7 weeks. The corresponding block in histogram will flash.



- Press ‘HISTORY’ button again to view the month historical data denoted by “per month” display. Use BWD/FWD button to look up the usage of energy for last 24 months. The histogram shows the data for the current and last six months usage and the corresponding block in histogram will flash.



- Press ‘MODE’ button to switch among ENERGY/COST/CO2 modes



- Press “HISTORY” button once again back to normal display.

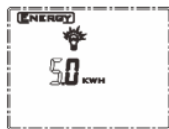
Alarm

- Press ‘TIME/ALARM’ button to set the alarm. “OFF” flashing indicates that the alarm function is off, press FWD/BWD button to switch on the alarm.



10

- Press ‘**TIME/ALARM**’ button again to set maximum daily usage, use **FWD/BWD** button to adjust the threshold value.



- Press ‘**TIME/ALARM**’ button again will back to normal display with a leaf symbol in the screen. The alarm is activated.



- The alarm will activate(if enabled) if the threshold is passed. The display screen flashes for approximately 10 seconds. A “beep” sound will also be made.. After the 10 seconds, the leaf icon will change into a light bulb icon. The light bulb icon will remain on the screen for 24 hours or until a button is pressed.

11

Miscellaneous Functions

◆ Clearing data

• Cumulative Energy Usage Data

The cumulative energy usage data is stored in the transmitter. First, remove the transmitter battery and press the **CHECK** button. While the **CHECK** button is being pressed, re-insert the batteries. A red-color LED button will appear. Release the **CHECK** button when this light disappears. The LED will flash five times to confirm the clearing of the cumulative energy usage data. This action will also lead to the resetting of the cumulative energy usage values shown on the display.

• History

Press both **MODE** and **HISTORY** buttons on the display until a “beep” sound is heard. This should occur after about 8 seconds of holding both buttons down. Release the buttons once the “beep” is heard. History data on the display is cleared.



The transmitter and display are paired together via a single ID. The pairing occurs when the “**CHECK**” button on the transmitter and the “**SEARCH**” button of display unit are pressed one after the other. The link signal indicator on the display stops blinking once the pairing is completed. The pairing adds a layer of security by ensuring that the transmitter measurements are only read by its paired display.

• Clear ID code of the Display unit

Remove battery of the display. Now re-insert batteries while holding down **MODE** and **SEARCH** buttons. Continue to hold down the buttons for about three seconds until two successive “beep” sounds are heard. Release the two buttons. Display ID code is cleared.

• Update the transmitter ID code:

Remove the batteries in the transmitter. Press and hold “**CHECK**” button on the transmitter. Now re-insert the batteries and continue to hold the buttons until a light is displayed. Now, release the “**CHECK**” button. An ID code has been randomly generated. The LED will flash 10 times to confirm the operation.

• Increase update frequency of data

Press “**CHECK**” button of the transmitter to temporary increase the frequency of updates sent to the display. The update frequency goes back to the default rate after some time.

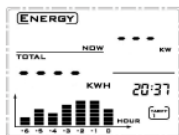
Important Safeguards

- Sensor installation should be done by a certified electrician or a professional installer. Please contact your retailer for more information.
- The sensor can make accurate measurements up to 70A. If the amperage is larger, an error signal will appear on the display.
- Do not place the transmitter in an open environments exposed to rain, snow or a magnetic field
- Do not place transmitter or display in a vibrating environment.
- The display consists of a LCD panel. Pressure or vibrations may damage to the panel.
- Do not place transmitter or display in a high-temperature environment. (ex near radiators, stoves, heaters etc).
- Do not place transmitter or display in places of high humidity or water (ex. bathroom, etc).
- There are no serviceable parts. Do not attempt to repair. Please contact your retailer in case of a problem.


12

FAQS

- ◆ **Question 1: I cannot see the wireless link signal indicator or data on the screen. Does it mean wireless link between transmitter and display is down?**

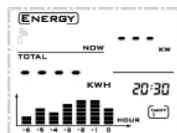


A: Yes. Please follow the following troubleshooting methods:

1. Hold the **SEARCH** button on the display down for 2 seconds. This will start the wireless signal search. The link symbol  flashes on the display screen. The flashing will stop once the link is established. Repeat if needed.
2. Press the **CHECK** button on the right side of the transmitter to increase frequency of updates. Now, do 1).

3. Check if the low power icons for the display or transmitter are shown on the display. If yes, replace batteries.
4. Move the display unit closer to the transmitter. Then, do 1).
5. Remove batteries in the display unit. Wait 10 seconds and reinsert them. Then do 1).
6. Clear the ID code in the display. Remove the transmitter's batteries. After a 10 second wait, reinsert the batteries. Then do 1).

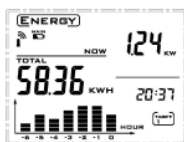
- ◆ **Question 2: The wireless link signal is flashing. Data is missing on the display?**



A: The wireless link between the transmitter and display is down. The display unit is searching for the transmitter. See Question 1 for further steps

13

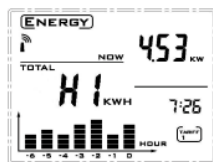
- ◆ **Question 3: The battery symbol for the transmitter and/or display is on the screen?**



A: The battery is low. Please replace the batteries.

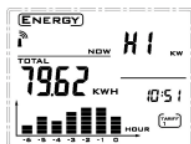
A: The voltage has exceeded the measurement range. Reset the transmitter. See Clearing Data section

- ◆ **Question 5: The display shows "HI" on the cumulative energy consumption field?**



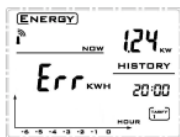
A: The cumulative energy consumption has exceeded its maximum value of 9999 KWH. The cumulative energy consumption value on the transmitter and display must be reset to 0. See clearing cumulative energy consumption data in the Clearing Data section

- ◆ **Question 4: The display shows "HI" on the current energy consumption field?**



14

◆ **Question 6: The display shows "Err" and the histogram is blank?**



A: Data cannot be read from the internal memory. Please provide unit back to the retailer.

◆ **Question 7: The energy consumption values reported by the Wireless Energy Monitor is different than that reported on my utility meter?**

A: Please try the following solutions

Solution 1: The sensors may not be correctly installed. Please re-install the sensors.

Solution 2: This may be attributed to the home electric power factor that typically ranges between 0.8-1.0. In the ideal case when it is 1.0, all electricity drawn from the utility is used completely by the home appliances. However, in most

cases, some degree of electricity (and power) is wasted. To account for the power factor, take two sets of electricity consumption values on consecutive days from the Wireless Energy Monitor and the utility meter. The energy used recorded by the Wireless Energy Monitor divided by what's reported from the utilitymeter provides an approximation for the power factor. Now divide the voltage value set (110 Volts or 220 Volts) by this calculated power factor and set it on the display (Press Mode signal to set voltage). Below an example

Date	Wireless Energy Monitor (Kwh)	Utility meter (Kwh)
12/01/10	100	3250
12/02/10	135	3290

12/01- 12/02 consumption reported by Wireless Energy Monitor = (135 - 100) KWh = 35 Kwh
 12/01- 12/02 consumption reported by Utility meter = (3290 - 3250) KWh = 40 KWh
 Power factor estimate = 35/40 = 0.875
 New Voltage = 110/0.875 = 126 (rounded) Volts (Assumed voltage set to 110Volts)
 New Voltage = 220/0.875 = 251 (rounded) Volts (Assumed voltage set to 220Volts)

15

Electrical Specifications

Wireless signal frequency: 433.92MHz

Wireless transmission distance: Min 30m, Max 70m (at sight)

Range: 10w ~ 17.5KW (single phase)

Internal power supply: 3 batteries

External Power: 5V DC for display

Operating temperature: -10 °C ~ 60 °C

Storage temperature: -20 °C ~ 75 °C

Packing List

Display 1 pcs
Transmitter 1 pcs
Sensors 2 pcs
User Manual 1 pcs
Power adapter 1pcs
AA batteries 6Pcs

Shenzhen Flamingo Technology Co., Ltd

Address: 5/F, Beikechuangye Bldg, No.1077
 Nanhai Blvd, Zhaoshang of Nanshan,
 Shenzhen, Guangdong, China

E-mail: sales@fmg-tech.com

Web: www.fmg-tech.com